



color printer

Performance color, unmatched value



Phaser 8400 Color Printer

The obvious choice for color printing.

24 page-per-minute print speed. A 500 MHz processor. The fastest first-page-out time of any color printer. Stunning, rich color output on virtually any media. All at a price far below what you'd expect to pay for a professional quality printer. The Phaser 8400 printer is an unbeatable value for thriving businesses that need the benefits of color without any trade-offs.

Unbelievable performance at a great price

The Phaser 8400 color printer provides the power and persuasiveness of color at an unprecedented price. And, like business itself, it moves fast — single-pass solid ink technology produces full color at amazing speeds — a superior alternative to laser printers.

- Full-page color at up to **24 ppm** - never keeps you waiting.
- Just **6 seconds** until your first page prints.
- Built around a high-speed 500 MHz PowerPC processor, with up to **512 MB** memory, true Adobe® PostScript® 3™, and an optional hard drive (20 GB minimum) to deliver maximum performance in a busy, shared environment.
- Rich, lavish color from a workgroup desktop color printer. Reduce or eliminate reliance on costly off-site service bureaus.

Vivid color, down to a fine point

Solid ink produces images so lush, so vibrant you simply have to see it to believe it. With crisp, clean text, vivid charts and graphics, and true-to-life photos, it's the kind of output that gets your business noticed.

- Solid ink color is truer, more saturated and remarkably consistent, page after colorful page.
- New **2400 FinePoint™** image enhancement technology provides the ultimate in print quality.
- Consistent results on a wide range of media, including thick cover stocks and transparencies.
- Automatic color optimization means you get the colors you expect, every time.

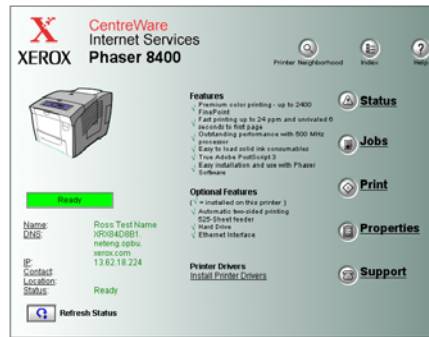


Technology with a style all its own.

Great for every office user...

Xerox has the art of solid ink print technology down to a science. Solid ink technology gives you more for less, with environmentally friendly consumables and an ease-of-use no other printer can match.

- The Phaser 8400 printer is as easy to load as a stapler. Solid ink sticks can be dropped into their slots anytime and ink levels are easily visible.
- Compact, no-mess, solid ink sticks produce less waste and minimize environmental impact.
- Out of the box and installed on your network in four short steps with streamlined automatic installation and walk-up capabilities.
- The Intelligent Ready feature learns and anticipates your printing habits and workload; warms up or enters power-saving mode accordingly.



...and for the System Administrator

Do-it-yourself ease of use for printer users means system admins can focus on network-level issues. And we provide the tools to allow them to do exactly that, more effectively.

- Xerox CentreWare® printer management provides quick desktop access to a wealth of features, including printer and job status, in-depth accounting information, email alerts, simplified printer installation and network administration.
- A web server built into the printer (CentreWare IS Embedded Web Server) allows you to manage, configure and troubleshoot printers from anywhere using a web browser.
- The smart Phaser 8400 printer can help users troubleshoot on their own, using the PhaserSMART® remote diagnostic tool, an internet-based automated support system.

need more information?

Find it at www.xerox.com/office

See it in action. Visit your Xerox reseller, or see a virtual demo: www.xerox.com/office/8400demo

Solid ink technology. What makes solid ink so special? Our solid ink web site is full of facts, figures, FAQs, customer comments and industry awards:

www.xerox.com/office/solidink

Services & Support. Learn about Total Satisfaction Services™ award-winning programs:

www.xerox.com/office/support

Get color connected. Sneak a peek at Color Connection (exclusively for our printer owners), which includes access to a special web site, newsletters, tutorials, product updates and great ideas: www.colorconnection.xerox.com

Superior design and ease of use

- All your configuration and firmware settings are saved on a tiny memory card that can be migrated to any other Phaser 8400 printer.
- Feed almost any kind of media — paper, labels, transparencies, envelopes and business cards — from all trays.
- Expand capabilities as your business grows — networking, additional memory and other optional features can be added to B, N and DP configurations.
- Optional two-sided (duplex) printing is automatic and fast.
- Short paper path contributes to outstanding speed and reliability.

- 1 Use 100-sheet Tray 1 for heavy paper up to 80 lb. cover and 120 lb. index (220 gsm), business cards, envelopes, transparencies and more.
- 2 Standard 525-sheet Tray 2 feeds up to 32 lb. bond (122 gsm).
- 3 Add one or two 525-sheet high-capacity paper feeders to boost your capacity to as much as 1,675 sheets.



Phaser 8400DX

Call today. For more information, call 1-877-362-6567 or visit us at www.xerox.com/office.



CONFIGURATIONS	8400B	8400N	8400DP	8400DX
Performance				
Print speed	24 ppm Full Color / 24 ppm Black and White			
First page out	6 seconds in full color			
Memory (Std / Max)	128 MB / 512 MB RAM		256 MB / 512 MB RAM	
Processor	500 MHz PowerPC, Adobe® PostScript® 3™, PCL5c			
Internal hard drive	Optional w/upgrade	Optional	Standard (20 GB)	
Maximum duty cycle	Up to 85,000 pages/month			
Print Quality				
Maximum resolution	2400 FinePoint™, 600 dpi			
Networking				
Network connectivity	Bi-directional Parallel, USB 2.0	10/100BaseTX Ethernet, Bi-directional Parallel, USB 2.0		
Paper Handling				
Automatic 2-sided printing	Optional	Standard		
Paper input capability	100-sheet Tray 1; 525-sheet Tray 2			
Standard				Additional 525-sheet feeder
Productivity				
Standard features	Custom-size pages, Phaser Installer, Intelligent Ready			
	Embedded Web Server, Remote printing, Email alerts, Enhanced PrintingScout, PhaserSMART®, Job Accounting, Usage Analysis Tool, Booklet Printing, Smart Trays			Job Pipelining with compression
				Proof/Secure/Saved print, HD Collation, Extended font storage
Warranty	One year, Xerox Total Satisfaction Guarantee			

SPECIFICATIONS

Network/Software

Printer management Xerox CentreWare Printer Management for Microsoft, Novell and Unix, CentreWare IS Embedded Web Server, CentreWare Web Administrator, Xerox NDPS Gateway, Usage Analysis Tool (not available on non-networked model)

Font capabilities 137 Resident PS fonts and 81 PCL

Printer drivers Windows 98/Me, Windows NT 4.x, Windows 2000/XP, MacOS 9.x/X, version 10.1 or higher, Novell NetWare 4.x/5.x/6.x, UNIX (Linux 5.2+, Sun OS 4.x/Sun Solaris 2.4+, DEC, HP/UX 11.x, IBM AIX 4.2+, SGI, SCO), Xerox Walk-Up Printing Driver

Languages True Adobe® PostScript® 3™, PCL5c emulation with automatic sensing and switching

Paper handling

Tray 1: (standard) 16 lb. Bond – 80 lb. Cover (60 – 220 gsm), coated, Phaser High Resolution Photo Paper, labels, envelopes, business cards, Phaser Professional Solid Ink Transparencies, Phaser Weatherproof Paper, Phaser Postcards, Phaser Trifold Brochures. Media sizes: A/Letter, Legal, Executive, Statement, US Folio, A4, A5, A6, B5 JIS, B5 ISO, 3 x 5 in. Index Cards, custom sizes; Envelopes: #10 Commercial, DL, C5, #5½, #6½, Monarch, Booklet, Lee (A7), Choukei 3 Gou, Choukei 4 Gou, custom.

Tray 2: 525-sheet tray (standard) 16 – 32 lb. Bond (60 – 122 gsm), coated, Phaser High Resolution Photo Paper, labels, envelopes, business cards, Phaser Professional Solid Ink Transparencies, Phaser Weatherproof Paper, Phaser Postcards, Phaser Trifold Brochures. Media sizes: A/Letter, Legal, Executive, Statement, US Folio, A4, B5 JIS, B5 ISO; Envelopes: #10 Commercial, DL, and C5.

Tray 3: 525-sheet Feeder (standard on DX) Same media weights and sizes as Tray 2.

Tray 4: 525-sheet Feeder (optional) Same media weights and sizes as Tray 2.

Automatic 2-sided printing: 16 lb. Bond – 60 lb. Cover (60 – 163 gsm)

Special features

Enhanced PrintingScout Instantly displays pop-up Help if attention is needed during print jobs.

Phaser Installer automatically gets you printing in seconds.

PhaserSMART remote diagnostic tool provides automated internet-based support.

Productivity tools: Secure Print™, Proof Print™, Saved Print™, Booklet printing, Intelligent Ready, Negative and mirror images, Scaling, Watermarks, Custom-size pages, Saved Job Repository, Cover sheets, Collation printing™, Remote printing, Image Smoothing, Job Completion Notification, Separation pages, N-Up printing, MailLinX Email Alerts, Job Accounting, Job Pipelining, Printer Neighborhood, Extended font storage*

*Requires a hard drive and Advanced Features Set

Color controls

Color standards PANTONE®-approved solid-color simulations, Adobe PostScript device-independent color, CIE International color standards, and support for ICC and Apple ColorSync color management systems.

Color correction TekColor Dynamic Correction Color Profiles selectable from the driver: Automatic, sRGB Display, sRGB Vivid, SWOP, Euroscale, Commercial, Black and White, None.

Operating

Dimensions width: 16.3 in. (42.2 cm), height: 14.5 in. (36.8 cm), depth: 21 in. (53.34 cm), weight: 60 lbs. (28 kg.)

Environment Temperature: Non-operating: -30° to 60° C (-22° to -140° F); Operating 10° to 32° C (50° to 90° F) Relative Humidity: Non-operating: 10 – 95%, Operating: 10% – 80%. Noise Level: 33dBA standby, 54 dBA running.

Electrical 110 – 120 VAC, 60 Hz; 220 VAC, 50 Hz, Consumption: 230 W avg./1500 W max. ENERGY STAR-qualified (S configuration).

Regulatory FCC Part 15, Subpart B, UL listed to UL 1950, CSA certified to CSA-C22.2 No. 950, CE Mark applicable to directives 73/23 EEC and 89/336/EEC CDRH, EN 55022.

Total Satisfaction Services

Warranty 1-year depot repair warranty (on-site upgrade available).

Services Online web technical support and telephone support. Innovative service offerings include optional extended Service Agreements and custom training for your internal Help Desk. The Phaser 8400 printer is backed by the Xerox Total Satisfaction Guarantee.

MEDIA AND SUPPLIES

Phaser Color Printing Media

Phaser Premium Color Printing Paper
500 sheets, 24 lb./90 gsm bond
A/Letter (8.5 x 11 in.) 016-1368-00
A4 (210 x 297 mm) 016-1369-00

Phaser Premium Cover Paper
100 sheets, 60 lb./163 gsm cover
A/Letter (8.5 x 11 in.) 016-1823-00
A4 (210 x 297 mm) 016-1824-00

Phaser Professional Solid Ink High Resolution Photo Paper
A/Letter (8.5 x 11 in.) 016-1808-00
A4 (210 x 297 mm) 016-1809-00

Phaser Professional Solid Ink Business Cards
25 sheets, 80 lb./225 gsm, 10 cards/sheet
A/Letter (8.5 x 11 in.) 103R01041
A4 (210 x 297 mm) 103R01042

Phaser Professional Solid Ink Transparencies
50 sheets
A/Letter (8.5 x 11 in.) 103R01039
A4 (210 x 297 mm) 103R01040

Phaser Color Printing Labels
100 Sheets
A/Letter 30 labels/sheet 016-1812-00
A4, 8 labels/sheet 016-1815-00

Phaser Premium Postcards
100 sheets, 65 lb./176 gsm
A/Letter, 4/sheet 103R01016
A4, 4/sheet 103R01017

Phaser Weatherproof Paper
150 Sheets, 27 lb./100 gsm
A/Letter 103R01020
A4 103R01021

Phaser Trifold Brochures
150 Sheets, 65 lb./176 gsm
A/Letter 103R01018
A4 103R01019

Consumables

Genuine XEROX® Solid Ink 8400
3 Sticks Black (3,400 pages) 108R00604
3 Sticks Cyan (3,400 pages) 108R00605
3 Sticks Magenta (3,400 pages) 108R00606
3 Sticks Yellow (3,400 pages) 108R00607
6 Sticks Black (6,800 pages) 108R00608

Routine Maintenance Items

Standard Capacity Maintenance Kit 108R00602 (up to 10,000 pages)
Extended Capacity Maintenance Kit 108R00603 (up to 30,000 pages)

Options and Upgrades

Internal Hard Drive (20GB) 097S03172
128 MB Memory ZMD128/A
256 MB Memory ZMD256/A
Feeder, 525-sheet capacity 097S03174
B to BD Upgrade 097S03175
B to N Upgrade 097S03176
N to DP Upgrade 097S03177
N to Advanced Features 097S03178
DP to Advanced Features 097S03179

Capacities are approximate, based on 5% coverage on an A-sized page.

For the location of your nearest Xerox reseller, or for more information, visit our Web site or call: United States and Canada **1-877-362-6567**. Other regions, see your local Xerox or Fuji/Xerox representative.



XEROX

Worldwide Partner



Copyright © 2004 XEROX CORPORATION. All rights reserved. Contents of this publication may not be reproduced in any form without permission of XEROX CORPORATION. XEROX®, The Document Company®, the digital X®, Phaser®, PhaserSmart®, PhaserShare, and CentreWare, are registered trademarks and TekColor® is a trademark of XEROX CORPORATION in the U.S. and/or other countries. Total Satisfaction Services is a service mark of XEROX CORPORATION. All other trademarks are the property of their respective manufacturers. PANTONE Colors generated may not match PANTONE-identified standards. Consult current PANTONE publications for accurate color. PANTONE® and other Pantone, Inc. trademarks are the property of Pantone, Inc. As an ENERGY STAR, partner, Xerox Corporation has determined that this product with an ES Option meets the ENERGY STAR guidelines for energy efficiency. The ENERGY STAR name and logo are registered U.S. trademarks. The information in this brochure is subject to change without notice. 1/04 BT

84XBR-01UB